

**Phospho-NFKB(S536) Antibody**  
**Affinity Purified Rabbit Polyclonal Antibody (Pab)**  
**Catalog # AP3178a**

**Specification**

---

**Phospho-NFKB(S536) Antibody - Product Information**

Application	WB,E
Primary Accession	<a href="#">Q04206</a>
Reactivity	Human, Mouse
Host	Rabbit
Clonality	Polyclonal
Isotype	Rabbit IgG

**Phospho-NFKB(S536) Antibody - Additional Information**

**Gene ID** 5970

**Other Names**

Transcription factor p65, Nuclear factor NF-kappa-B p65 subunit, Nuclear factor of kappa light polypeptide gene enhancer in B-cells 3, RELA, NFKB3

**Target/Specificity**

This NFKB Antibody is generated from rabbits immunized with a KLH conjugated synthetic phosphopeptide corresponding to amino acid residues surrounding S536 of human NFKB.

**Dilution**

WB~~1:500

E~~Use at an assay dependent concentration.

**Format**

Purified polyclonal antibody supplied in PBS with 0.09% (W/V) sodium azide. This antibody is purified through a protein A column, followed by peptide affinity purification.

**Storage**

Maintain refrigerated at 2-8°C for up to 2 weeks. For long term storage store at -20°C in small aliquots to prevent freeze-thaw cycles.

**Precautions**

Phospho-NFKB(S536) Antibody is for research use only and not for use in diagnostic or therapeutic procedures.

**Phospho-NFKB(S536) Antibody - Protein Information**

**Name** RELA

**Synonyms** NFKB3

**Function** NF-kappa-B is a pleiotropic transcription factor present in almost all cell types and is the

endpoint of a series of signal transduction events that are initiated by a vast array of stimuli related to many biological processes such as inflammation, immunity, differentiation, cell growth, tumorigenesis and apoptosis. NF-kappa-B is a homo- or heterodimeric complex formed by the Rel-like domain- containing proteins RELA/p65, RELB, NFKB1/p105, NFKB1/p50, REL and NFKB2/p52. The heterodimeric RELA-NFKB1 complex appears to be most abundant one. The dimers bind at kappa-B sites in the DNA of their target genes and the individual dimers have distinct preferences for different kappa-B sites that they can bind with distinguishable affinity and specificity. Different dimer combinations act as transcriptional activators or repressors, respectively. The NF-kappa-B heterodimeric RELA-NFKB1 and RELA-REL complexes, for instance, function as transcriptional activators. NF-kappa-B is controlled by various mechanisms of post-translational modification and subcellular compartmentalization as well as by interactions with other cofactors or corepressors. NF-kappa-B complexes are held in the cytoplasm in an inactive state complexed with members of the NF-kappa-B inhibitor (I- kappa-B) family. In a conventional activation pathway, I-kappa-B is phosphorylated by I-kappa-B kinases (IKKs) in response to different activators, subsequently degraded thus liberating the active NF-kappa-B complex which translocates to the nucleus. The inhibitory effect of I- kappa-B on NF-kappa-B through retention in the cytoplasm is exerted primarily through the interaction with RELA. RELA shows a weak DNA- binding site which could contribute directly to DNA binding in the NF- kappa-B complex. Besides its activity as a direct transcriptional activator, it is also able to modulate promoters accessibility to transcription factors and thereby indirectly regulate gene expression. Associates with chromatin at the NF-kappa-B promoter region via association with DDX1. Essential for cytokine gene expression in T- cells (PubMed:[15790681](#)). The NF-kappa-B homodimeric RELA-RELA complex appears to be involved in invasin-mediated activation of IL-8 expression. Key transcription factor regulating the IFN response during SARS-CoV-2 infection (PubMed:[33440148](#)).

#### Cellular Location

Nucleus. Cytoplasm. Note=Nuclear, but also found in the cytoplasm in an inactive form complexed to an inhibitor (I-kappa-B) (PubMed:1493333). Colocalized with DDX1 in the nucleus upon TNF-alpha induction (PubMed:19058135). Colocalizes with GFI1 in the nucleus after LPS stimulation (PubMed:20547752). Translocation to the nucleus is impaired in L.monocytogenes infection (PubMed:20855622)

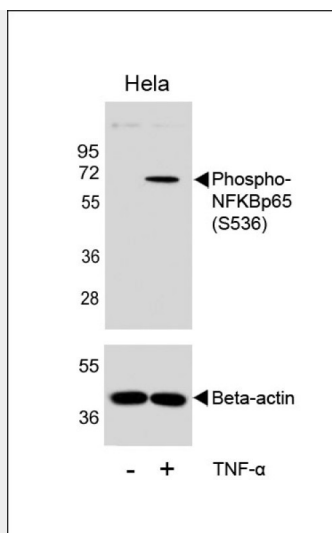
#### Phospho-NFKB(S536) Antibody - Protocols

Provided below are standard protocols that you may find useful for product applications.

- [Western Blot](#)
- [Blocking Peptides](#)
- [Dot Blot](#)
- [Immunohistochemistry](#)
- [Immunofluorescence](#)
- [Immunoprecipitation](#)
- [Flow Cytometry](#)
- [Cell Culture](#)

#### Phospho-NFKB(S536) Antibody - Images





Western blot analysis of lysates from HeLa cell line, untreated or treated with TNF- $\alpha$ , 20 ng/ml, using Phospho-NFKBp65(S536) Antibody (Cat. #AP3176a)(upper) or Beta-actin (lower).

### Phospho-NFKB(S536) Antibody - Background

NFKB1 or NFKB2 is bound to REL, RELA, or RELB to form the NFKB complex. The p50 (NFKB1)/p65 (RELA) heterodimer is the most abundant form of NFKB. The NFKB complex is inhibited by I-kappa-B proteins (NFKBIA or NFKBIB), which inactivate NFKB by trapping it in the cytoplasm. Phosphorylation of serine residues on the I-kappa-B proteins by kinases (IKBKA or IKBKB) marks them for destruction via the ubiquitination pathway, thereby allowing activation of the NFKB complex. Activated NFKB complex translocates into the nucleus and binds DNA at kappa-B-binding motifs such as 5-prime GGGRNNYYCC 3-prime or 5-prime HGGARNYYCC 3-prime (where H is A, C, or T; R is an A or G purine; and Y is a C or T pyrimidine).

### Phospho-NFKB(S536) Antibody - References

Zamora, M., et al., J. Biol. Chem. 279(37):38415-38423 (2004). Jeong, S.J., et al., Blood 104(5):1490-1497 (2004). Bohuslav, J., et al., J. Biol. Chem. 279(25):26115-26125 (2004). Yeh, P.Y., et al., J. Biol. Chem. 279(25):26143-26148 (2004). Jang, H.D., et al., J. Biol. Chem. 279(23):24873-24880 (2004).

### Phospho-NFKB(S536) Antibody - Citations

- [Long noncoding RNA atlas of the inflammation caused by asthma in mice](#)
- [Nanoformulated paclitaxel and AZD9291 synergistically eradicate non-small-cell lung cancers in vivo.](#)
- [miR-221/222 promote cancer stem-like cell properties and tumor growth of breast cancer via targeting PTEN and sustained Akt/NF- \$\kappa\$ B/COX-2 activation.](#)
- [Activation of NF- \$\kappa\$ B by TMPRSS2/ERG Fusion Isoforms through Toll-Like Receptor-4.](#)